

Premixer 300 hl ph

Premixer with a capacity of 300 hl ph in a very good condition for 6 components, constructed in 1998. The installation is dismantled. The installation was producing shandy and other beverages mixed with beer in inline process.

Type Paramix Innopro CMX	300 hl ph	1998	KHS
Equipment-Modules			
- Degassing			
- Mixing and Carbonization			
- Dosing of raw material			
Control	S5 / ET 200	1998	Siemens
Visualization	Operator console Flow sheet	1998	Lauer

For more information please ask for detailed documents provided by ES PROJECTS.

Price

Price:

Negotiation



Module Degassing

Circulation pump		1998	KPA
Evacuation pump		1998	Sihi
Outlet pump		1998	APV
Vacuum tank - 2 pieces	-1...1,0 bar 1.104 l	1998	KHS
Dosing of stripping gas with magnetic flow meter control		1998	Krohne



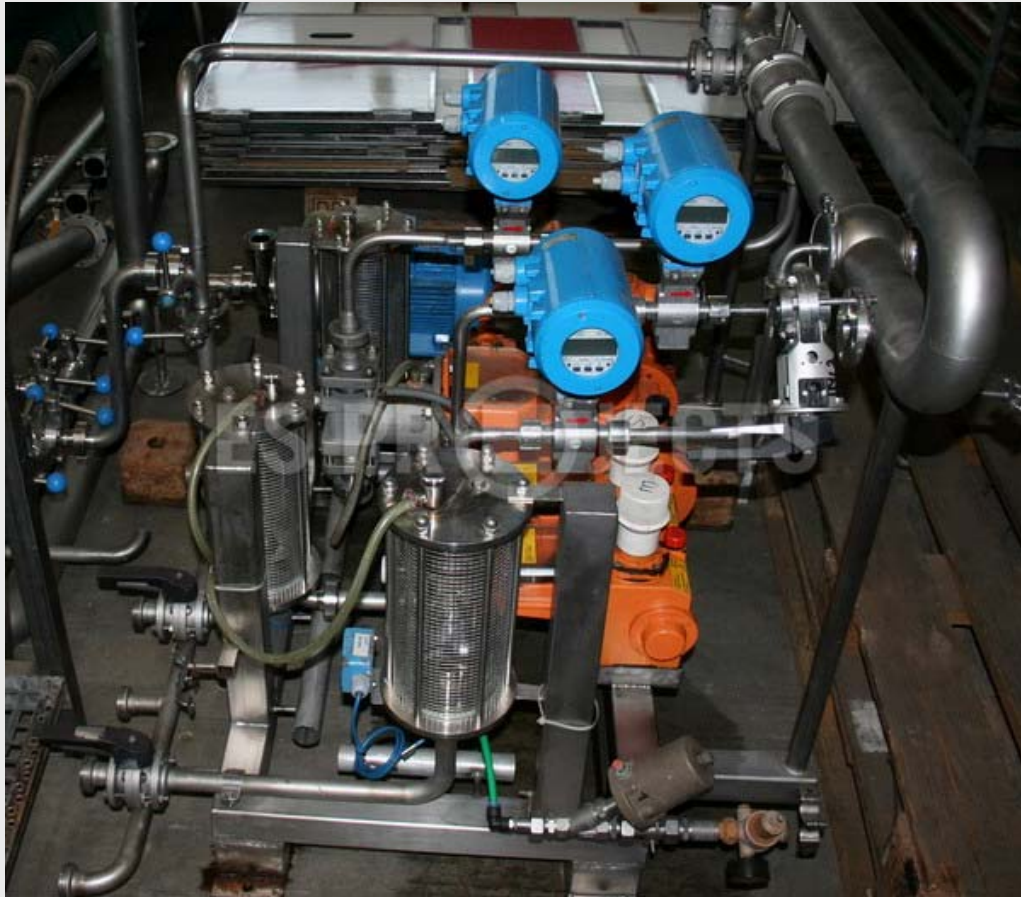
Module Mixing and Carbonisation

Components	6 Components Beer Water Sugar 3 different raw materials		
Beer dosing - Magnetic flow meter - Regulation valve		1998	Krohne Samson
Sugar dosing - Mass flow meter - Regulation valve		1998	Micro Motion Samson
Carbonisation - Magnetic flow meter - Regulation valve		1998	Krohne Samson
Measuring total flow - Magnetic flow meter		1998	Krohne
Buffertank - with filling level probe	1350 l 8,0 bar	1998	KHS



Module Dosing of Raw Materials

Dosing pump - with frequency control - three steps - for three components (Acid, essence and raw material)	Type E-KH31P32	1998	Bran + Lübbe
Rotary pump - for big dosing		1998	KPA
Control - 3 x magnetic flow meter		1998	Krohne



Diverse Photos – Premixer 300 hl ph



Switch Cabinet



Flow Sheet

Diverse Photos – Premixer 300 hl ph



Regulation



Module Degassing